

MAJOR CATEGORIES OF DEFICIENCIES 2018-2020

Deficiencies Main Group	Category of deficiencies	2018		2019		2020	
		Def	Def %	Def	Def %	Def	Def %
Certificates & Documentation	Crew Certificates	1,163	2.9	1,221	3.1	1,050	3.8
	Documents	2,884	7.2	2,528	6.4	1,704	6.1
	Ship Certificates	2,220	5.5	2,121	5.3	1,215	4.4
Structural Condition		1,839	4.6	1,910	4.8	1,379	4.9
Water/Weathertight condition		1,827	4.5	1,788	4.5	1,294	4.6
Emergency Systems		2,062	5.1	2,603	6.5	1,591	5.7
Radio Communication		924	2.3	866	2.2	556	2.0
Cargo operations including equipment		239	0.6	217	0.5	136	0.5
Fire safety		5,218	13.0	5,224	13.1	3,661	13.1
Alarms		370	0.9	381	1.0	260	0.9
Working and Living Conditions (ILO 147)*	Living Conditions	8	0.0	17	0.0	4	0.0
	Working conditions	347	0.9	413	1.0	232	0.8
Working and Living Conditions (MLC, 2006)	MLC, 2006 Title 1	76	0.2	44	0.1	19	0.1
	MLC, 2006 Title 2	359	0.9	332	0.8	275	1.0
	MLC, 2006 Title 3	2,006	5.0	2,203	5.5	1,595	5.7
	MLC, 2006 Title 4	3,218	8.0	3,246	8.2	2,770	9.9
Safety of Navigation		4,876	12.1	4,362	11.0	3,097	11.1
Life saving appliances		3,290	8.2	3,194	8.0	2,134	7.6
Dangerous goods		64	0.2	63	0.2	34	0.1
Propulsion and auxiliary machinery		1,620	4.0	1,785	4.5	1,322	4.7
Pollution prevention	Anti Fouling	3	0.0	9	0.0	1	0.0
	MARPOL Annex I	601	1.5	558	1.4	371	1.3
	MARPOL Annex II	12	0.0	16	0.0	8	0.0
	MARPOL Annex III	5	0.0	8	0.0	2	0.0
	MARPOL Annex IV	327	0.8	355	0.9	243	0.9
	MARPOL Annex V	762	1.9	586	1.5	468	1.7
	MARPOL Annex VI	693	1.7	522	1.3	299	1.1
	Ballast Water	573	1.4	622	1.6	473	1.7
ISM		1,906	4.7	1,782	4.5	1,298	4.6
ISPS		553	1.4	508	1.3	300	1.1
Other		220	0.5	271	0.7	135	0.5

* As per 1 April 2020 all member Authorities have ratified MLC,2006. Up till then records of Merchant Shipping Convention (ILO147) and the protocol of 1996 to the Merchant Shipping Convention (ILOP147) were possible.

TOP 5 CATEGORIES OF DEFICIENCIES 2020

Deficiencies	2019		2020	
	Deficiencies	% Total deficiencies	Deficiencies	% Total deficiencies
Fire safety	5,224	13.14	3,661	13.11
Safety of Navigation	4,362	10.97	3,097	11.09
Labour conditions-Health protection, medical care, social security	3,246	8.17	2,770	9.92
Life saving appliances	3,194	8.03	2,134	7.64
Emergency Systems	2,528	6.36	1,704	6.10

TOP 5 DEFICIENCIES 2020

Deficiencies	2019		2020	
	Deficiencies	% Total deficiencies	Deficiencies	% Total deficiencies
ISM	1,782	4.48	1,298	4.65
Fire doors/openings in fire-resisting divisions	1,035	2.60	857	3.07
Oil record book	484	1.22	530	1.90
Nautical publications	544	1.37	400	1.43
Cleanliness of engine room	624	1.57	381	1.36

MARITIME LABOUR CONVENTION, 2006

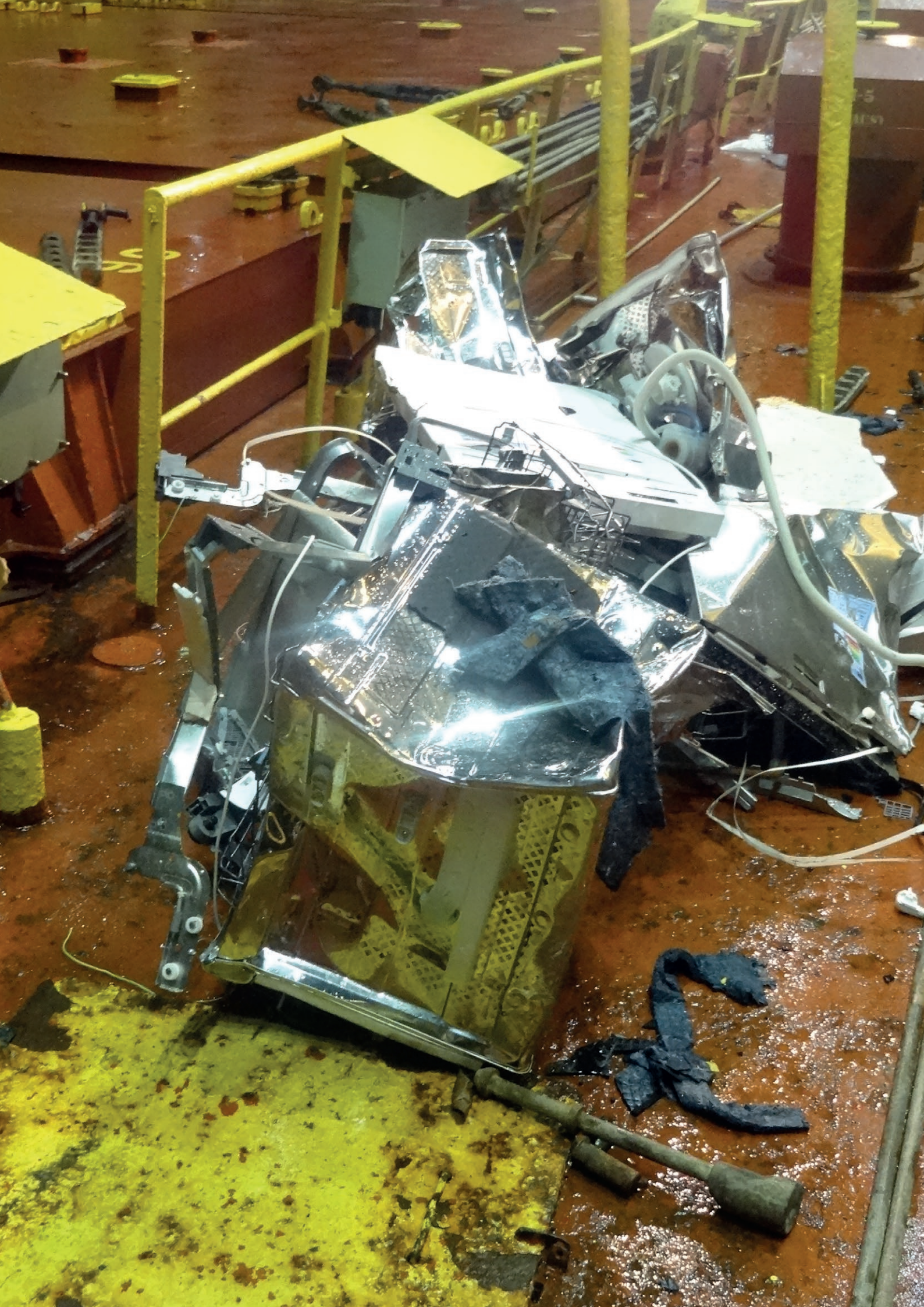
MLC Deficiencies per Area	Nr MLC Deficiencies	% of Total of Nr. MLC deficiencies	Nr Detainable MLC Deficiencies	% of Detainable deficiencies of MLC deficiencies
MLC,2006 Ship's certificates and documents	115	1.9	9	7.8
Area 2 Medical certification of seafarers	131	2.2	9	6.9
Area 3 Qualifications of seafarers	7	0.1	0	0.0
Area 4 Seafarers' employment agreements	645	10.7	82	12.7
Area 5 Use of any licensed or certified or regulated private recruitment and placement service for seafarers	4	0.1	0	0.0
Area 6 Hours of Works or rest	446	7.4	16	3.6
Area 7 Manning levels for the ship	45	0.7	20	44.4
Area 8 Accommodation	484	8.1	28	5.8
Area 9 On-board recreational facilities	25	0.4	1	4.0
Area 10 Food and catering	1,035	17.2	35	3.4
Area 11 Health and safety and accident prevention	2,659	44.2	56	2.1
Area 12 on-board medical care	178	3.0	3	1.7
Area 13 On-board complaint procedure	77	1.3	2	2.6
Area 14 Payment of wages	98	1.6	38	38.8
Area 15 Certificate or documentary evidence of financial security for repatriation	34	0.6	1	2.9
Area 16 Certificate or documentary evidence of financial security relating to shipowners liability	29	0.5	2	6.9
Total	6,012	100.0%	302	5.0%

MLC DEFICIENCIES TOP 5

Deficiencies	2019		2020	
	Deficiencies	% Total deficiencies	Deficiencies	% Total deficiencies
Seafarers' employment agreement (SEA)	484	6.4	530	8.8
Electrical	374	4.9	328	5.5
Access / structural features (ship)	298	3.9	259	4.3
Cleanliness of engine room	296	3.9	250	4.2
Records of seafarers' daily hours of work or rest	337	4.4	207	3.4

MLC DETAINABLE DEFICIENCIES TOP 5

MLC detainable deficiencies	2019		2020	
	Detainable deficiencies	% Total detainable deficiencies	Detainable deficiencies	% Total detainable deficiencies
Seafarers' employment agreement (SEA)	43	11.8	79	26.2
Non-payment of wages	28	7.7	19	6.3
Wages	27	7.4	19	6.3
Cleanliness of engine room	27	7.4	19	6.3
Manning specified by the minimum safe manning doc	24	6.6	20	6.6



DETENTIONS OF SHIPS WITH RO RELATED DETAINABLE DEFICIENCIES PER RECOGNIZED ORGANIZATION 2020 (CASES IN WHICH 10 OR MORE INSPECTIONS ARE INVOLVED)

Recognized Organization	Abbr	Total number of inspections	Number of individual ships inspected*	Total number of detentions**	Detention % of total number of Inspections	+/- Percentage of Average 2020. (0.19)	Detention % of individual ships	+/- Percentage of Average Indiv. 2020. (0.21)
American Bureau of Shipping	ABS	1,563	1,515	1	0.06	-0.13	0.07	-0.14
Bulgarian Register of Shipping	BRS	80	65	-	-	-0.19	-	-0.21
Bureau Veritas	BV	2,902	2,668	5	0.17	-0.02	0.19	-0.02
China Classification Society	CCS	220	214	-	-	-0.19	-	-0.21
Columbus American Register	COLAMREG	14	9	-	-	-0.19	-	-0.21
Croatian Register of Shipping	CRS	32	28	-	-	-0.19	-	-0.21
DNV GL AS	DNVGL	4,902	4,565	4	0.08	-0.11	0.09	-0.12
Dromon Bureau of Shipping	DBS	169	136	4	2.37	2.17	2.94	2.73
Indian Register of Shipping	IRS	52	47	-	-	-0.19	-	-0.21
Intermaritime Certification Services, ICS Class	ICS	51	41	-	-	-0.19	-	-0.21
International Naval Surveys Bureau	INSB	134	108	1	0.75	0.55	0.93	0.72
International Register of Shipping	IS	56	45	-	-	-0.19	-	-0.21
Isthmus Bureau of Shipping, S.A.	IBS	55	48	3	5.45	5.26	6.25	6.04
KOREAN REGISTER	KR	415	404	-	-	-0.19	-	-0.21
Lloyd's Register	LR	3,054	2,879	3	0.10	-0.09	0.10	-0.10
Macosnar Corporation	MC	24	20	-	-	-0.19	-	-0.21
Maritime Bureau of Shipping	MBS	23	16	3	13.04	12.85	18.75	18.54
Maritime Lloyd	ML	43	25	1	2.33	2.13	4.00	3.79
Mediterranean Shipping Register	MSR	37	27	2	5.41	5.21	7.41	7.20
National Shipping Adjuster Inc.	NASHA	53	44	-	-	-0.19	-	-0.21
Nippon Kaiji Kyokai	NKK	2,151	2,060	1	0.05	-0.15	0.05	-0.16
Other	OTHER	73	58	1	1.37	1.18	1.72	1.52
Overseas Marine Certification Services	OMCS	39	36	-	-	-0.19	-	-0.21
Panama Maritime Documentation Services	PMDS	39	38	-	-	-0.19	-	-0.21
Panama Shipping Registrar Inc.	PSR	20	18	-	-	-0.19	-	-0.21
Phoenix Register of Shipping	PHRS	176	147	1	0.57	0.38	0.68	0.47
Polski Rejestr Statkow (Polish Register of Shipping)	PRS	147	123	-	-	-0.19	-	-0.21
Qualitas Register of Shipping S.A.	QRS	30	23	-	-	-0.19	-	-0.21
RINA Services S.p.A.	RINA	1,358	1,200	3	0.22	0.03	0.25	0.04
Russian Maritime Register of Shipping	RMRS	573	519	2	0.35	0.16	0.39	0.18
Shipping Register of Ukraine	SRU	68	47	-	-	-0.19	-	-0.21